

ELOfleet

Fleet Management System

RFID-BASED

FLEET MANAGEMENT SYSTEM

INCREASED SAFETY AND PRODUCTIVITY

- + State-of-the-art technology
- + Modular system design for more efficiency
- + Comprehensive analysis tools
- + Compatible with all popular forklift truck models



Modular and flexible

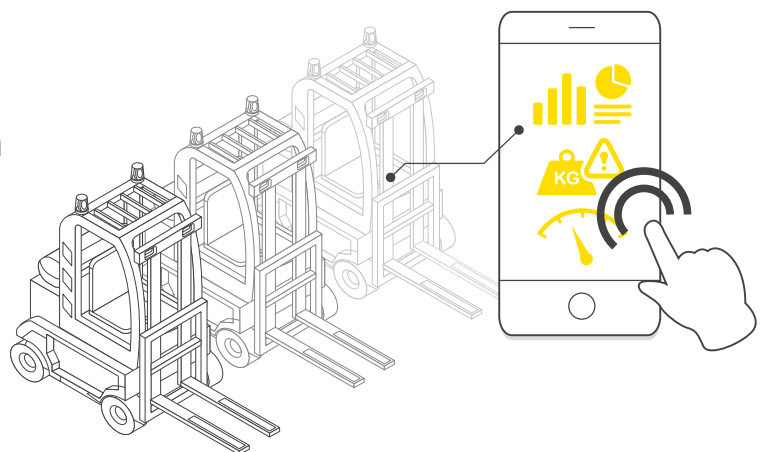
More safety when handling forklift trucks

ELOfleet is the innovative fleet management system for mixed fleets. The telematics system includes RFID based access control, fault logging and the analysis of vehicle and fleet performance data.

ELOfleet is an advanced, professional and manufacturer-independent assistance system for material handling equipment (MHE). Electronic access control and vehicle management are the core elements of this solution. System-assigned drivers eliminate the possibility of unauthorised use, thus the risk from improper handling is minimised.

The automatic switch-off feature when not in use or when operating conditions could damage the forklift truck result in minimised costs and a more effective use of your forklift truck fleet. The ability of monitoring operating conditions can result in overall fleet optimisation. Optimised utilisation and cost reduction are essential factors of modern fleet management systems. The new ELOfleet consists of a modular design and can be integrated with any fleet and device type. Shock sensors, load sensors and additional connectivity options ensure comprehensive protection of vehicles. The related data transfer module uses a hardwired data interface and wireless options (e.g. ZigBee, which is the current industry standard for radio networks, mobile network or WLAN).

Use with de-centralised server systems and Internet-Connection are possible. Modular software packages are used for data analysis, which can be individually adapted to fit the needs of users.



THE COMPONENTS

✓ ELOfleet Basic

ELOfleet Basic already offers all the essential features that a modern access system should include today. However, this variant only enables driver and vehicle assignment by transponder. All other system components can be added optionally at a later point in time meaning that more comprehensive and significant fleet management can be achieved retroactively.



✓ ELOfleet Professional

ELOfleet Professional leaves nothing to be desired when it comes to operations, functionality and analysis. All basic functions have been integrated in this module with a maximum of expansion options available. Operators have additional flexibility from using PIN and/or transponder modes. Additionally, the info-display provides important information.



✓ Shock sensor

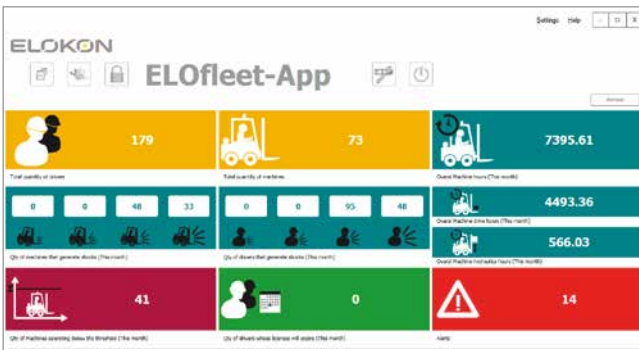
Tracking of operational load factors, detection of accident spots or avoiding collisions: these are the typical applications of the ELOfleet shock sensor module. Using PC software the precise measurement of threshold values enables the accurate recording of stress values. Up to four switching thresholds trigger an immediate or time-delayed alarm or switch-off depending on settings. The shock data is directly available in the ELOfleet system for further processing.



EFFICIENT AND VERSATILE

ELOfleet not only allows an optimal adaptation to customer needs through its modular hardware structure, it also offers optimal adaptation to the information requirements with its modular software concept.

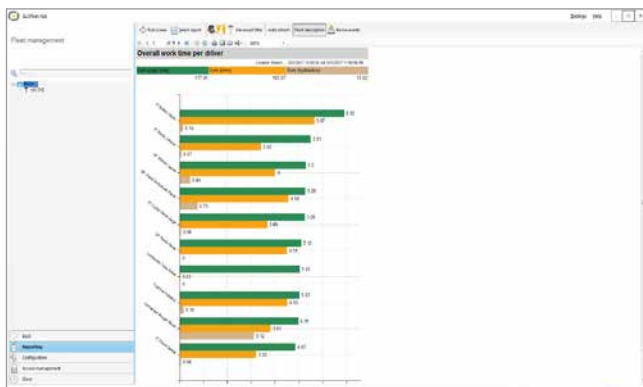
Fundamentally, ELOfleet allows the administration of a nearly unlimited number of vehicles and drivers. This includes setting variable and individual parameters, which enable simple, transparent and clear allocation of vehicle usage rights. ELOfleet's basic function is the allocation of vehicles and drivers and usage rights.



The ELOfleet software home screen

✓ Time recording module

Reports from the "time recording module" allow the analysis of all usage time data. Thus, insights on vehicle utilisation can be uncovered and, for example, service intervals can be optimised accordingly. In addition, relevant data on agreed terms and residual values of vehicles can be monitored.



Driver specific working time report

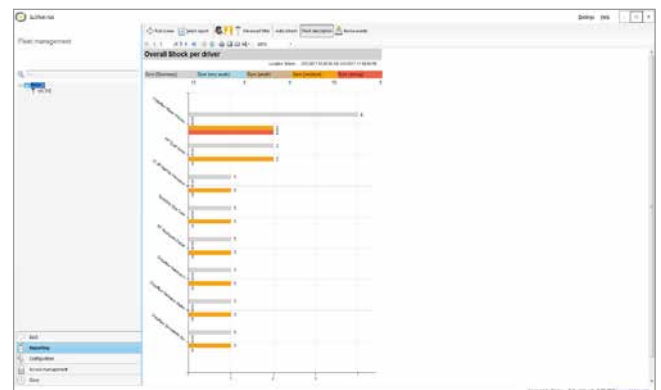
✓ The shock event module

Customers frequently wish to gain further insights when it comes to operational intensity, i.e. the load and strain on equipment. ELOfleet shock sensors are integrated into the vehicle and the ELOfleet software enables the setting of individual and precise load limits. Relevant triggers can be configured in relation to threshold values. Thus, for example, reducing maximum speed, stroke cut-off or even shutting down and blocking of a vehicle is possible. Relevant values are clearly displayed in the software reports.

✓ The event module

Customers who want to control other functions and gain maximum information about their vehicle fleet can discover these features in the „event“ module. A variety of signals can be analysed from the vehicle and the software provides the information comprehensively and transparently for evaluation in third-party programs, such as Microsoft Excel.

Easy data provision is important for swift data analysis. The information can be directly accessed from the control panel on the vehicle using a data cable.

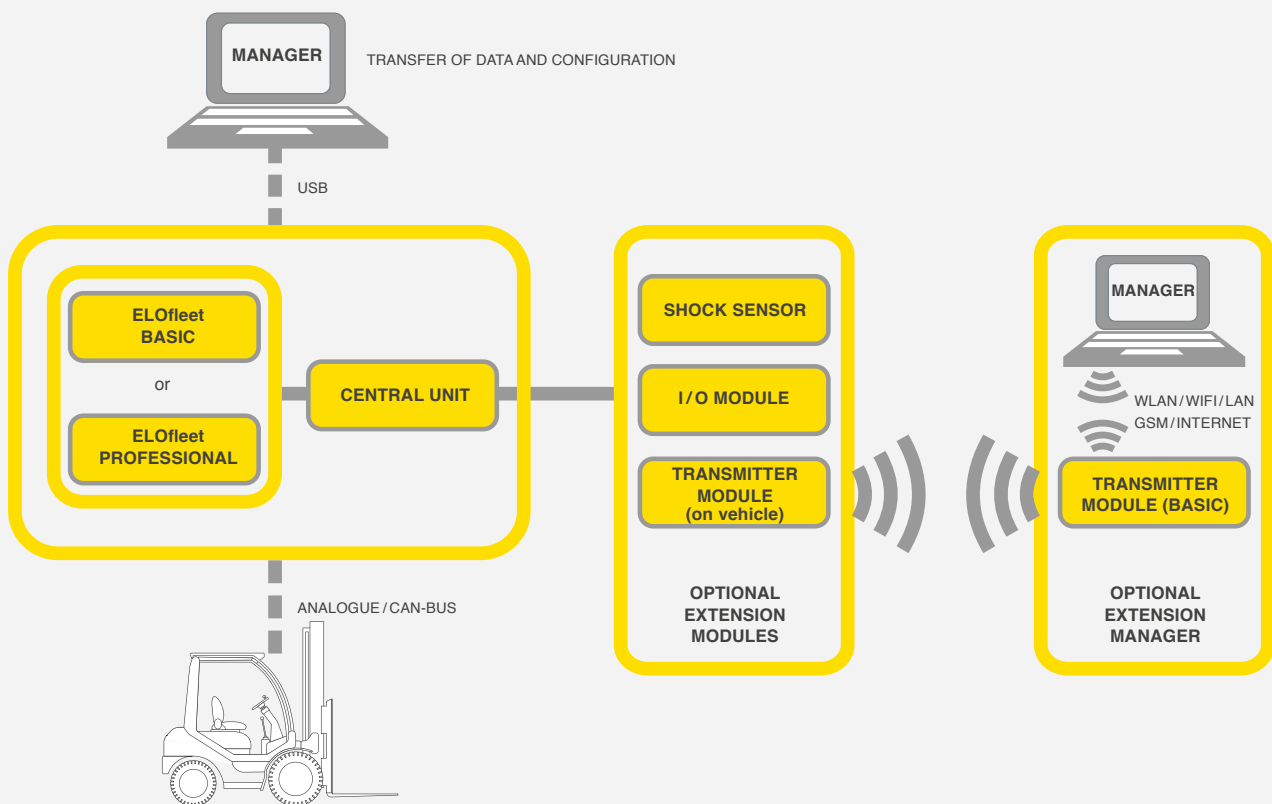


Overview of the shock events per driver

✓ Data transfer module

The „data transfer“ module enables ELOfleet to offer matching technology to flexibly provide data wirelessly via ZigBee / Xbee.

INTEGRATION AND DESIGN



TECHNICAL SPECIFICATIONS

Power supply	12 - 48 V \pm 20%	Basic module dimensions	90 x 106 x 37 mm
Protection type	IP 65	Basic module weight	400 g
Temperature range	-20° to 60°	Professional module dimensions	139 x 130 x 37 mm
Memory size	95.000 events	Professional module weight	800 g
Number of drivers	500 per vehicle	Control unit dimensions	174 x 80 x 58 mm
Number of vehicles	10.000 (approximate value)	Control unit weight	750 g
Inputs	3 digital inputs	Outputs	1 relay output, 1 digital output
I/O Module (optional)	8 digital inputs, 8 analogue inputs, 4 digital outputs		

ELOKON GmbH
 Gärtnerweg 49
 25436 Tornesch / GERMANY
 T. +49 4122 9570-0 E. info@elokon.com

ELOKON GmbH (Ltd.)
 Quayside Tower 2nd Floor, Broad Street, Birmingham
 B1 2HF West Midlands / UNITED KINGDOM
 T. +44 121 3922499 E. info@elokon.co.uk

ELOKON Polska Sp. z o.o.
 ul. Tytoniowa 22
 04-228 Warszawa / POLAND
 T. +48 22 8127138 E. info@elokon.pl